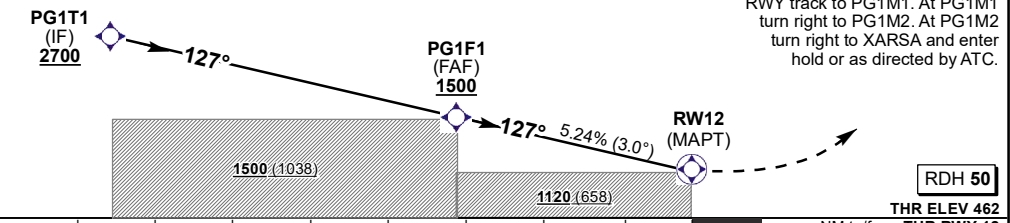


DIST (NM) to THR	6	5	4	3.1	3	2	1	
ADVISORY ALT (HGT)	2430 (1968)	2110 (1648)	1790 (1328)	1500 (1038)	1470 (1008)	1150 (688)	840 (378)	

**TRANSITION ALT 6700
TRANSITION LEVEL ATC**

MISSED APPROACH:
Climb to 3500FT ALT. Maintain RWY track to PG1M1. At PG1M1 turn right to PG1M2. At PG1M2 turn right to XARSA and enter hold or as directed by ATC.



CHANGE: Holding Altitude	OCA/H	A	B	C	GS	KT	80	100	120	140	160	
	Straight-in Approach	LNAV	1120 (658)	1120 (658)	1120 (658)	FAF to MAPT	M:S	2:20	1:52	1:33	1:20	1:10
						Rate of descent	FPM	425	531	637	744	850
	CIRCLING	1020 (555)	1090 (625)	1270 (805)	NOTE: 1. MAPT at THR12 (RW12). 2. Descend in the hold (UDNEG) to 4300FT ALT before commencing the approach. 3. Minimum holding ALT at XARSA 3500FT ALT.							